



# **N/XT LIFE CARPET RE-USE FOR SOCIAL HOUSING**

## *Case Study*

### ***Advancing the circular economy***

*In the fight against climate change, it is vital that every organisation does what it can to reduce its carbon footprint and find solutions that support our planet and communities.*

*Milliken's N/XT Life Circularity Programme includes carpet re-use initiatives where installed carpet tiles are recovered, renewed and re-installed in social housing and other community settings. This case study features some N/XT Life projects, in partnership with carpet re-use specialists Uplyfted, where ultra-low-carbon flooring has improved living conditions for people in social housing.*

*In Partnership with Uplyfted*

**N/XT LIFE™**  
CIRCULARITY PROGRAMME

*Milliken™*



# High performance modular carpet

In the projects illustrated in this case study, two Milliken carpet products were recovered from office installations at two large financial institutions.

Comfortable Concrete Retold – Urban Sketch is a tufted loop pile modular carpet. The design offers a tonal grey backdrop with a dusting of pastel colour.

Tracing Landscapes – Geography Lesson is a tufted, tip shear construction which includes a textural dimension. The solution dyed nylon offers rich, saturated colour and some additional inherent stain resistance.

Both products are manufactured with 100% Econyl® recycled nylon and feature Milliken’s WellBAC® Comfort cushion backing. Engineered for longevity and potential second life, these high-performance modular carpet products are originally installed with a 12-year wear guarantee. The cushion backing provides additional comfort, wear and acoustic performance making them ideal for re-use.

For their second life, Milliken co-ordinated the recovery and transport of the modular carpet to Uplyfted’s Wirral facility. The carpet tiles were removed, correctly palletised and shrink wrapped by flooring contractor CVT to ensure it was safe, dry and undamaged for maximum re-use.



# Uplyfted carpet renewal process

Uplyfted specialise in renewing modular carpet for the UK social housing sector, for maximum social value. Following a rigorous 5-step renewal process, Uplyfted’s team expertly sorts, cleans and rejuvenates recovered carpet tiles. Uplyfted then plays a vital role in supplying and installing renewed carpet directly where it is needed in social housing and other community spaces.

*‘Helping to create happier residents and thriving communities’*



Homes without carpet installed



Comfortable Concrete Retold – Urban Sketch installed in social housing homes

# Delivering social value

Many social housing premises are provided without carpet installed where occupants are left to live with cold, harsh bare floors, often for years. For residents, especially those in a vulnerable condition, carpet can offer some important life-enhancing benefits.

- **COMFORT** – a soft, more comfortable feel underfoot, particularly important for young children and the elderly who are more prone to falling.
- **WARMTH** – an insulating layer against a hard and often rough sub-floor that can make vital energy savings for those experiencing fuel poverty.
- **CALM** – acoustic comfort that keeps rooms quieter by reducing noise transmission.
- **HEALTH** – improved indoor air quality and psychological well-being that helps create a sense of home.

The renewed Urban Sketch and Geography Lesson carpet tiles were installed into multiple homes. Both carpet products’ robust quality and, tonal design has created a soft, neutral floor covering for a more comfortable and healthier living environment for several families.



Before and After Installation





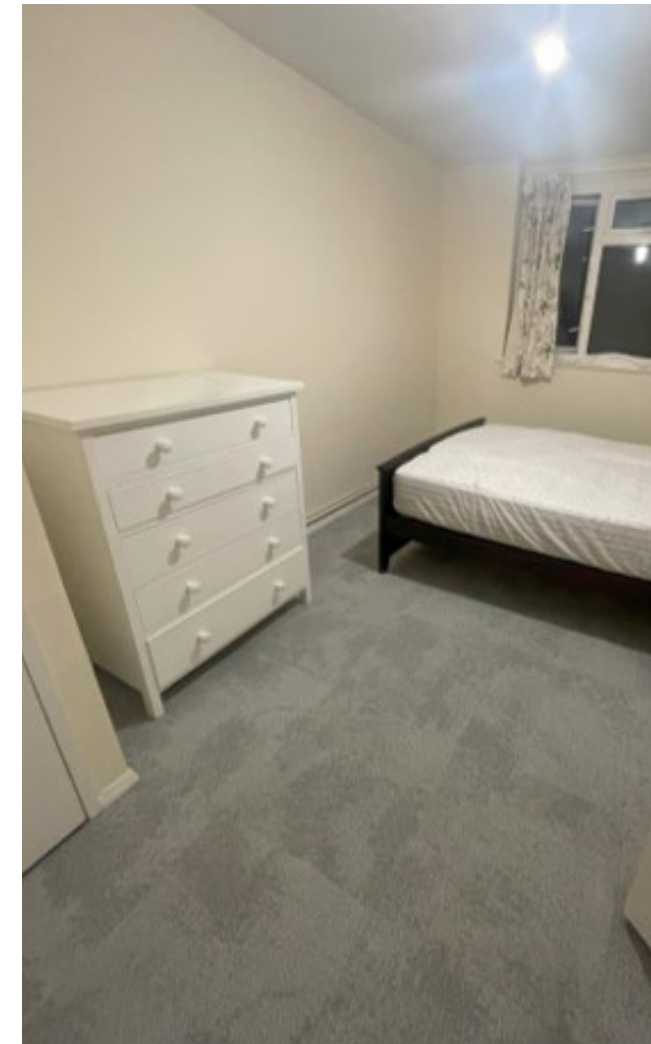
# How to participate in the Milliken / Uplyfted carpet re-use partnership

**STEP 1 :** Contact your Milliken Representative or email [n/xtlifeeurope@milliken.com](mailto:n/xtlifeeurope@milliken.com) with your requested Take-Back project details including location, quantity and backing type (PVC tiles cannot be considered).

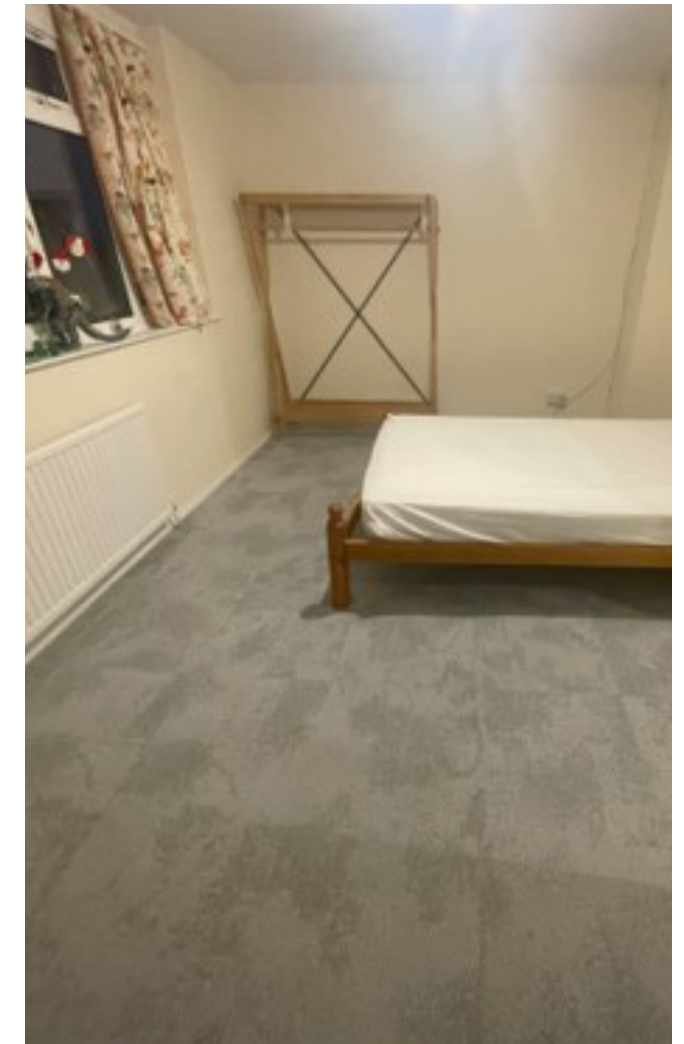
**STEP 2 :** Milliken will provide a quotation, arrange transport and provide guidance on palletising for maximum re-use.

**STEP 3 :** Once received and renewed by Uplyfted, Milliken will provide a Certificate of Take-Back after the product finds its way into re-use.

**STEP 4 :** Any products that cannot be re-used in the social sector are converted into other products. Where this is not possible a final option for landfill avoidance is recovery as waste to energy.



Tracing Landscapes – Geography Lesson installed in social housing homes



Tracing Landscapes – Geography Lesson installed in social housing homes



Comfortable Concrete Retold – Urban Sketch installed in social housing homes



Comfortable Concrete Retold – Urban Sketch installed in social housing homes

## N/XT Life Circularity Programme **N/XT LIFE** CIRCULARITY PROGRAMME

Through our N/XT Life Programme, Milliken is taking actionable steps to advance the circular economy and mitigate climate change. With longevity, transparency and circularity key to its success, we are committed to helping our clients reach their carbon goals and building certifications by eliminating waste and reducing carbon emissions.

In addition to our partnership with Uplyfted, Milliken's N/XT Life Circularity Programme offers clients three other easy routes to carpet re-use:

- **PURCHASE FROM RE-USE INVENTORY** – upcycled Milliken carpet tiles at zero kg embodied carbon can be purchased through [Orak](#), our Paris-based carpet Re-Use partner.
- **RE-USE FROM YOUR EXISTING OFFICE** – following a viability assessment by one of our flooring contractor partners, installed carpet tiles can be cleaned, uplifted and re-installed in another area of your project alongside a new Milliken carpet installation.
- **DONATIONS TO THE SALVATION ARMY** – your used carpet tiles can support a social enterprise initiative by donating directly via the Salvation Army's national depot network.

Full traceability is in place to help your organisation meet its carbon and ESG goals through all of these carpet re-use initiatives. Contact your Milliken Customer Services or Sales Representative for further details.

---

**CUSTOMER SERVICE**

SERVICE CLIENT / KUNDENSERVICE-  
CENTER / SERVICIO AL CLIENTE

**UK**

T. +44 (0)1942 612 777  
E. carpetenquiries@milliken.com

**FRANCE**

T. 08 05 54 27 77  
E. demandesmoquettes@milliken.com

**DEUTSCHLAND**

T. 0800 7243794  
E. verkauf@milliken.com

**ESPAÑA**

T. +44 (0)1942 612 777  
E. informaciondemoqueta@milliken.com

**SHOWROOMS****LONDON**

T. +44 (0)20 7336 7290

5 Berry Street,  
Clerkenwell,  
London EC1V 0AA

**PARIS**

T. +33 1 44 71 96 19

40 Rue Des Mathurins,  
75008 Paris

**EUROPEAN HEAD OFFICE**

SIÈGE EUROPÉEN / EUROPAZENTRALE /  
SEDE CORPORATIVA EUROPA

T. +44 (0)1942 826 073

Beech Hill Plant,  
Gidlow Lane,  
Wigan WN6 8RN

[www.millikenfloors.com](http://www.millikenfloors.com)

The Milliken logo is a stylized, handwritten-style script of the word "Milliken" in a dark grey color, followed by a small trademark symbol (TM).